

Hampshire Water Transfer and Water Recycling Project Environmental Statement - Figure 13.11 Landscape designations

VOLUME NUMBER: 6

PLANNING INSPECTORATE SCHEME NUMBER: WA010002

APPLICATION DOCUMENT REFERENCE: 6.3

APFP REGULATION: 5(2)(a)

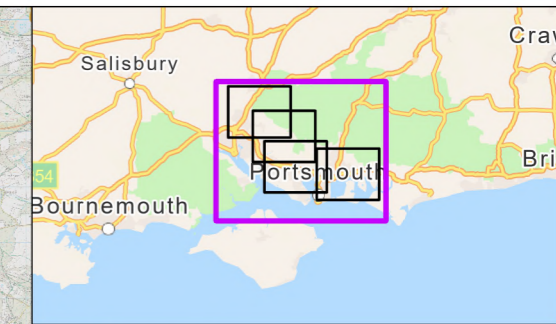
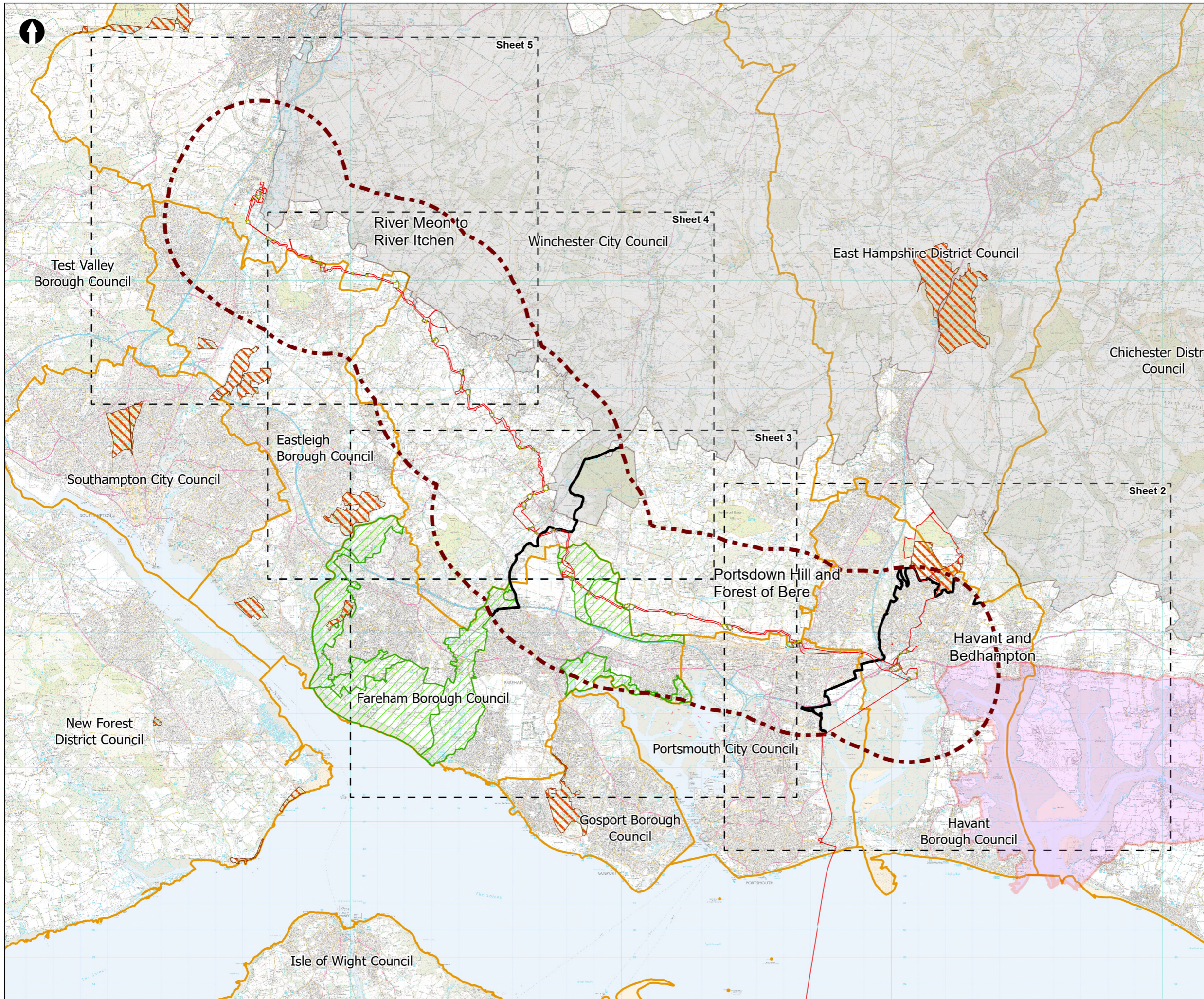
May 2026

Version 0



from
**Southern
Water** 

The Southern Water logo consists of the words 'Southern' and 'Water' stacked vertically in a dark blue, sans-serif font. To the right of the word 'Water' is a graphic element consisting of three stylized, wavy lines in shades of blue, representing water.



Order Limits

- Order Limits
- Landscape Study Area 3km
- Principal sections within the study area
- Sheet extent boxes 1:50k

Local planning authorities

- Local planning authorities
- South Downs National Park
- Water Recycling Plant Site
- Construction compounds

Landscape Designations

- Country Parks
- Chichester Harbour National Landscape
- Areas of Special Landscape Quality

Coordinate system: British National Grid; Datum: OSGB 1936
 Data sources: © Crown copyright and database rights 2026 Ordnance Survey 0100031673. Sources: Esri, TomTom, Garmin, FAO, NOAA, USGS, © OpenStreetMap contributors, and the GIS User Community

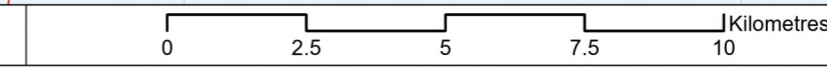
PROJECT TITLE
 Hampshire Water Transfer and Water Recycling Project



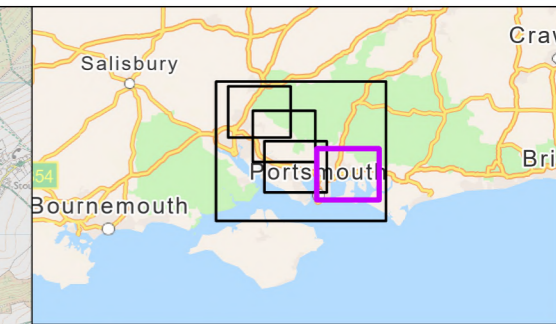
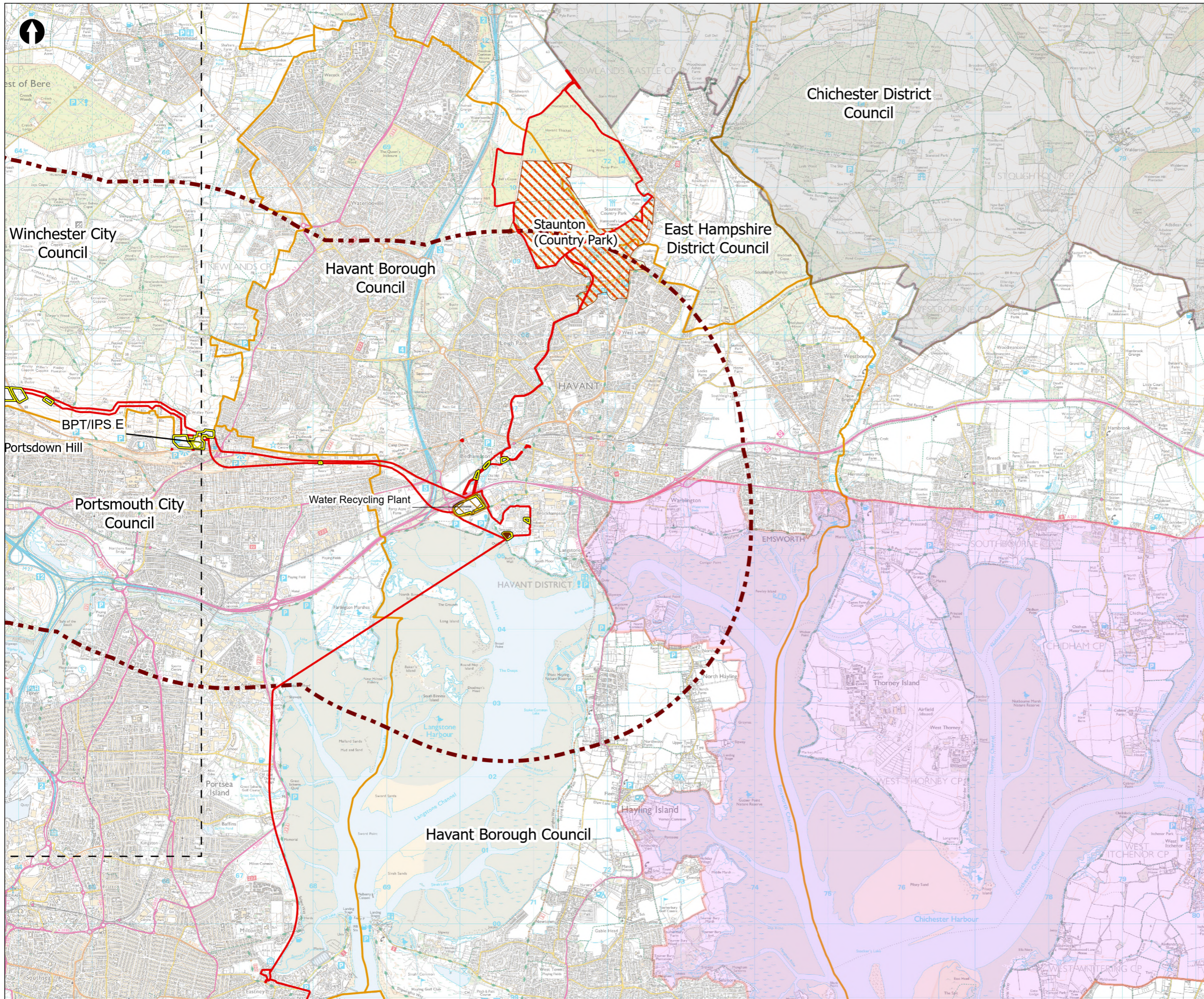
Figure 13.11
 Landscape designations
 Sheet 1 of 5

Drawn DL	GIS Checked MW	Checked MP	Approved AK
Scale at A3 1:136,000	Status Final	Revision 05	Security STD

© Southern Water 2026
 This document is issued for the party which commissioned it and for specific purposes connected with the captioned project only. It should not be relied upon by any other party or used for any other purpose. We accept no responsibility for the consequences of this document being relied upon by any other party, or being used for any other purpose, or containing any error or omission which is due to an error or omission in data supplied to us by other parties.



Drawing Number
PC5223-RHD-ES-ZZ-D-Z-0023



- Order Limits
- Landscape Study Area 3km
- Sheet extent boxes 1:50k
- Local planning authorities
- South Downs National Park
- Water Recycling Plant Site
- Construction compounds
- Limits of Deviation for Budds Farm Pumping Station
- Landscape Designations**
- Country Parks
- Chichester Harbour National Landscape
- Above Ground Plant**
- Break Pressure Tank & Intermediate Pumping Station

Coordinate system: British National Grid; Datum: OSGB 1936
 Data sources: © Crown copyright and database rights 2026 Ordnance Survey 0100031673. Sources: Esri, TomTom, Garmin, FAO, NOAA, USGS, © OpenStreetMap contributors, and the GIS User Community

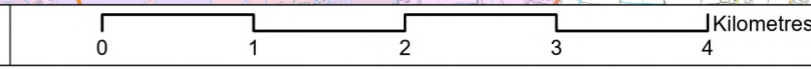
PROJECT TITLE
 Hampshire Water Transfer and Water Recycling Project



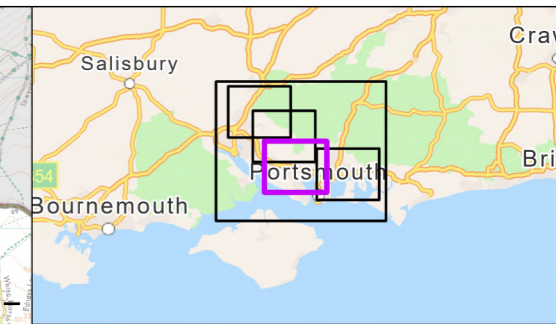
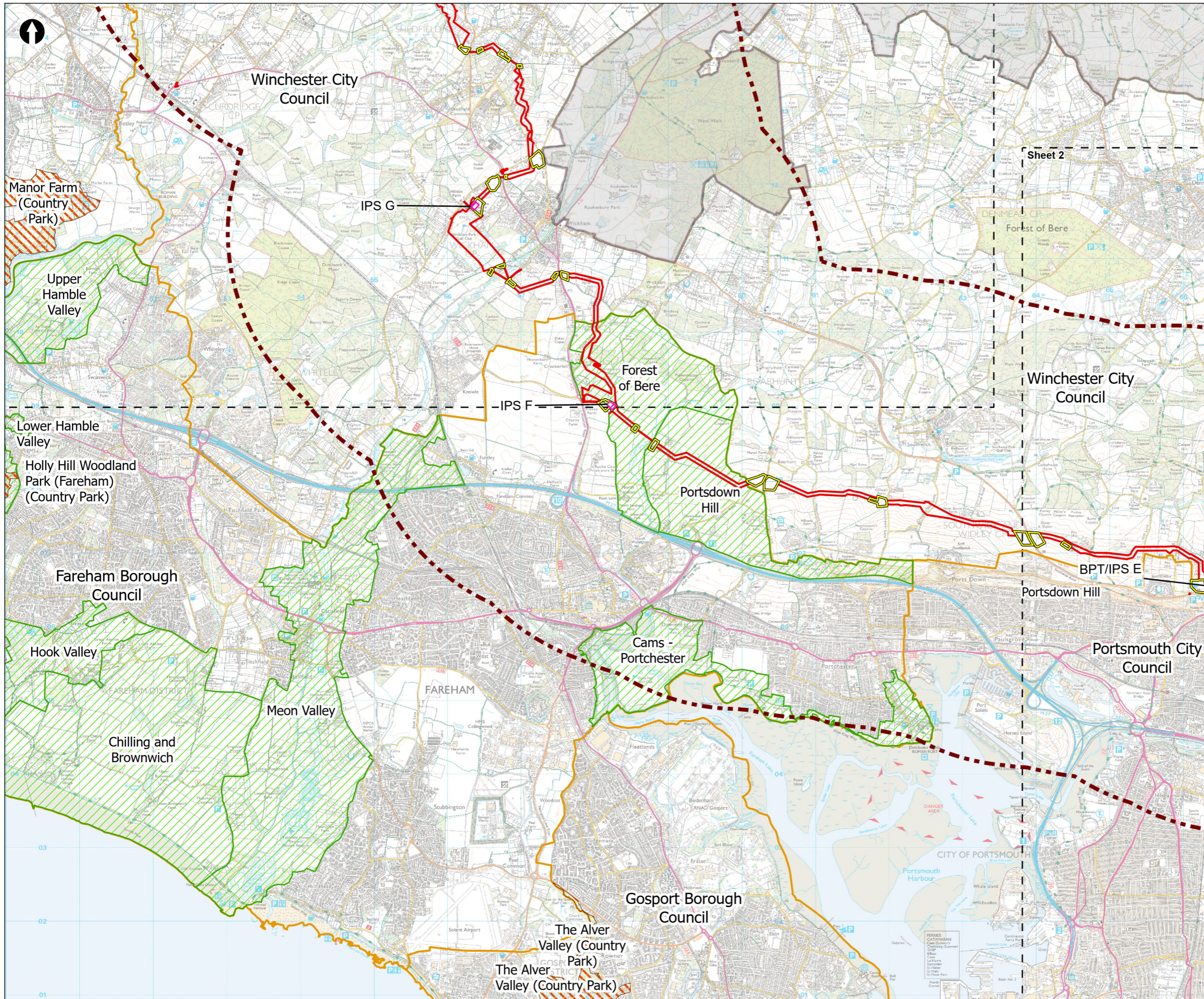
Figure 13.11
 Landscape designations
 Sheet 2 of 5

Drawn DL	GIS Checked MW	Checked MP	Approved AK
Scale at A3 1:50,000	Status Final	Revision 05	Security STD

© Southern Water 2026
 This document is issued for the party which commissioned it and for specific purposes connected with the captioned project only. It should not be relied upon by any other party or used for any other purpose.
 We accept no responsibility for the consequences of this document being relied upon by any other party, or being used for any other purpose, or containing any error or omission which is due to an error or omission in data supplied to us by other parties.



Drawing Number
PC5223-RHD-ES-ZZ-D-Z-0023



- Order Limits
- Landscape Study Area 3km
- Sheet extent boxes 1:50k
- Local planning authorities
- South Downs National Park
- Construction compounds
- Landscape Designations**
- Country Parks
- Areas of Special Landscape Quality
- Above Ground Plant**
- Break Pressure Tank & Intermediate Pumping Station
- Intermediate Pumping Station

Coordinate system: British National Grid; Datum: OSGB 1936
 Data sources: © Crown copyright and database rights 2026 Ordnance Survey 0100031673. Sources: Esri, TomTom, Garmin, FAO, NOAA, USGS, © OpenStreetMap contributors, and the GIS User Community

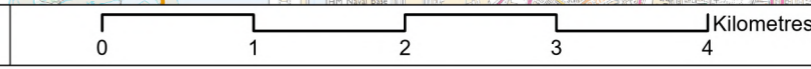
PROJECT TITLE
 Hampshire Water Transfer and Water Recycling Project

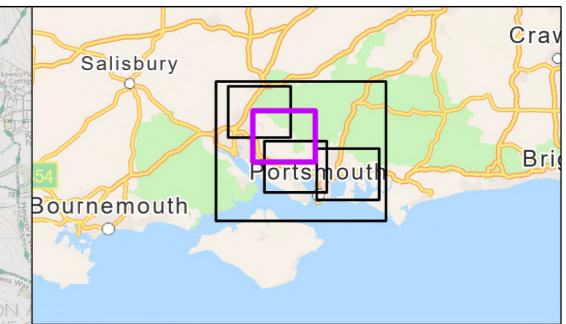
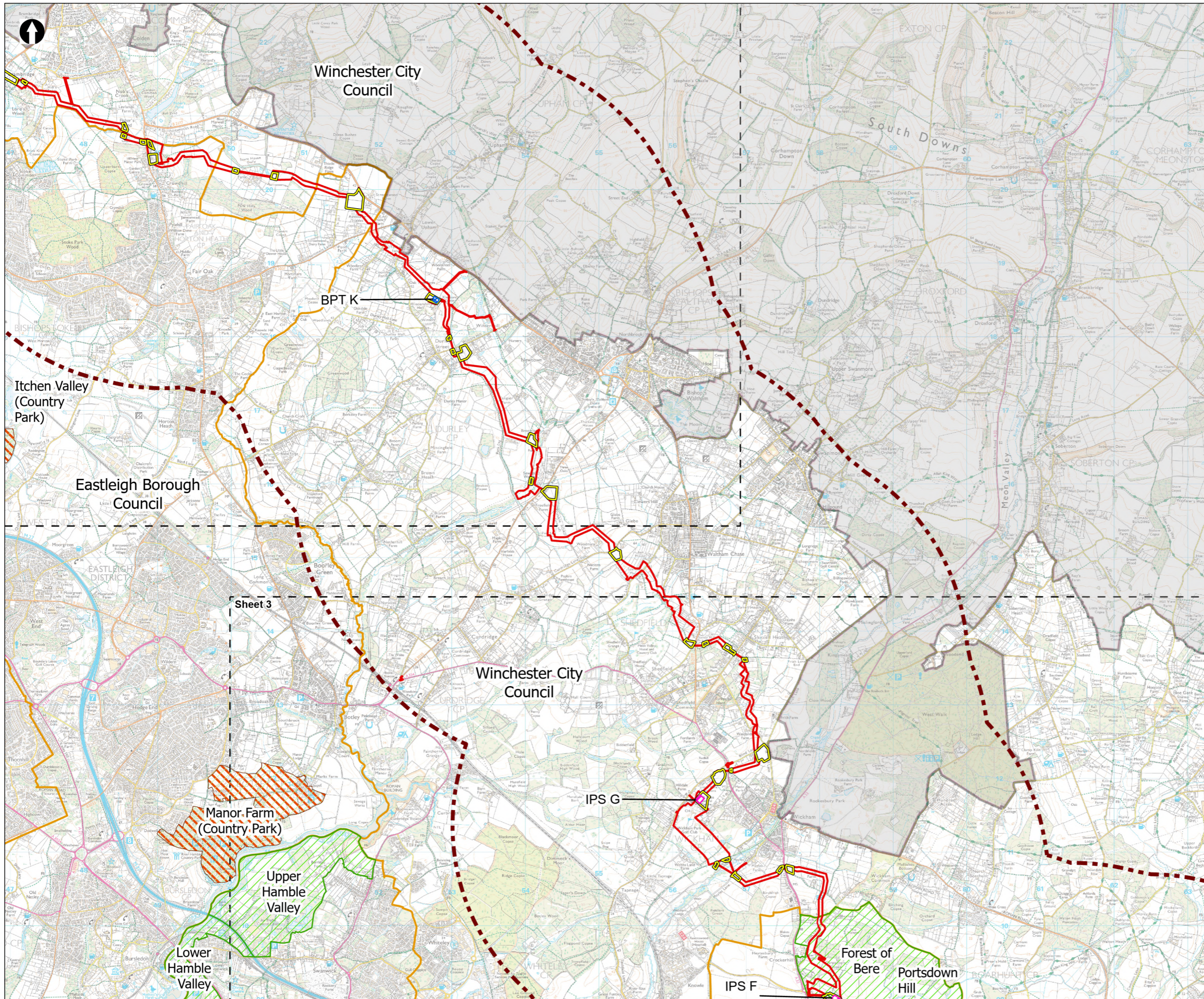


Figure 13.11
 Landscape designations
 Sheet 3 of 5

Drawn DL	GIS Checked MW	Checked MP	Approved AK
Scale at A3 1:50,000	Status Final	Revision 05	Security STD

Drawing Number
 PC5223-RHD-ES-ZZ-D-Z-0023





Order Limits

- Order Limits (Red dashed line)
- Landscape Study Area 3km (Red dashed line)
- Sheet extent boxes 1:50k (Black dashed line)
- Local planning authorities (Yellow outline)
- South Downs National Park (Grey shaded area)
- Construction compounds (Yellow outline)

Landscape Designations

- Country Parks (Orange hatched area)
- Areas of Special Landscape Quality (Green hatched area)

Above Ground Plant

- Break Pressure Tank (Blue square with X)
- Intermediate Pumping Station (Pink square with X)

Coordinate system: British National Grid; Datum: OSGB 1936
 Data sources: © Crown copyright and database rights 2026 Ordnance Survey 0100031673. Sources: Esri, TomTom, Garmin, FAO, NOAA, USGS, © OpenStreetMap contributors, and the GIS User Community

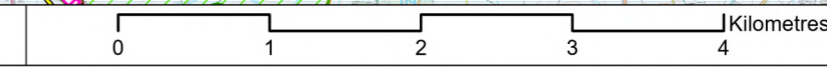
PROJECT TITLE
 Hampshire Water Transfer and Water Recycling Project



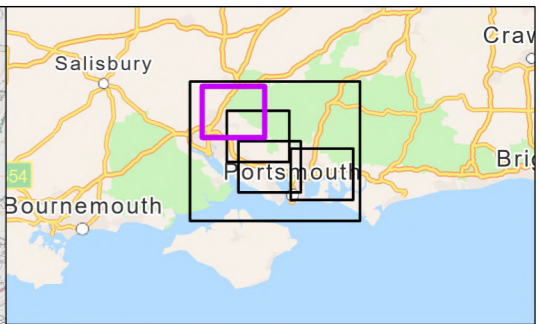
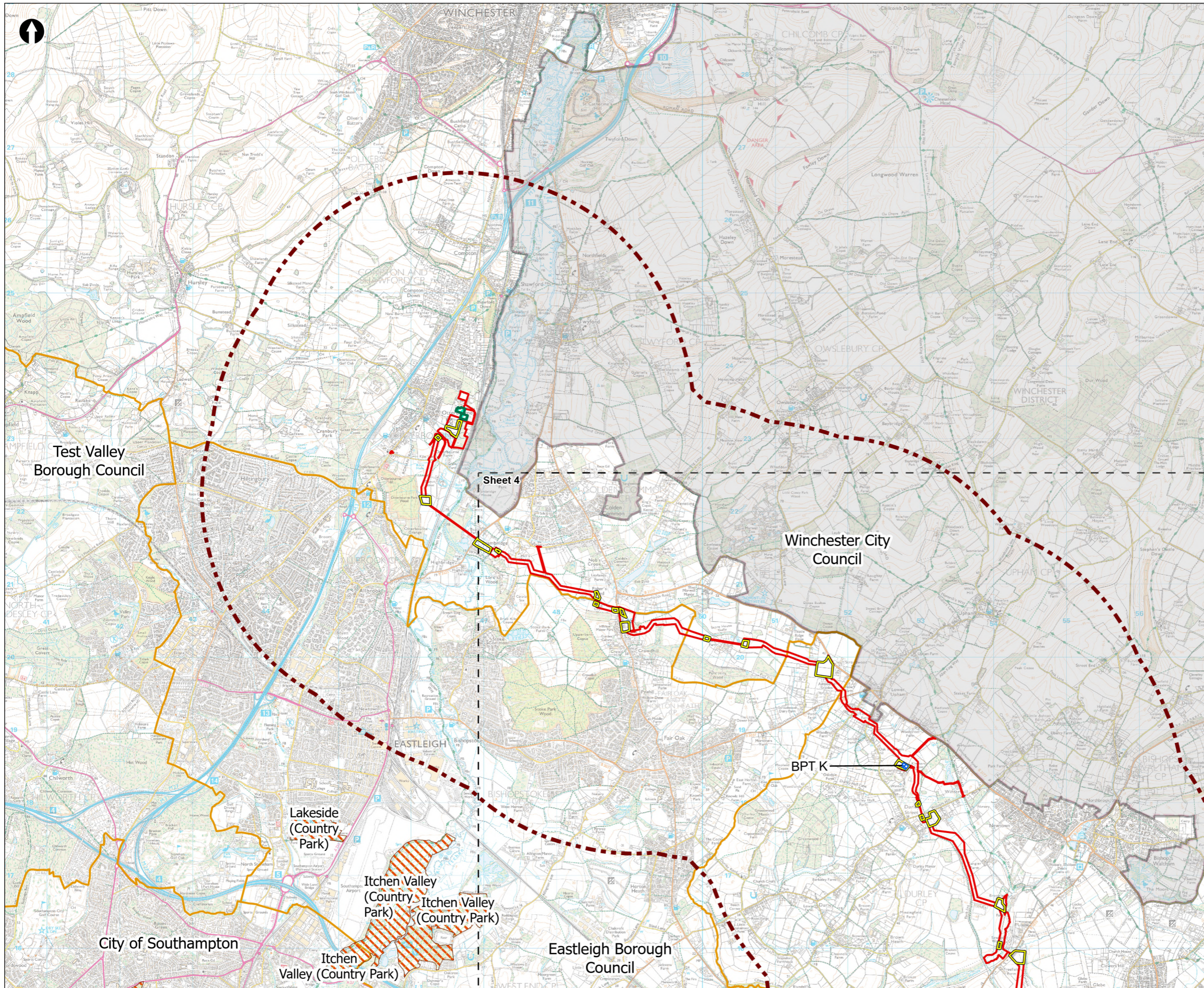
Figure 13.11
 Landscape designations
 Sheet 4 of 5

Drawn DL	GIS Checked MW	Checked MP	Approved AK
Scale at A3 1:50,000	Status Final	Revision 05	Security STD

© Southern Water 2026
 This document is issued for the party which commissioned it and for specific purposes connected with the captioned project only. It should not be relied upon by any other party or used for any other purpose.
 We accept no responsibility for the consequences of this document being relied upon by any other party, or being used for any other purpose, or containing any error or omission which is due to an error or omission in data supplied to us by other parties.



Drawing Number
 PC5223-RHD-ES-ZZ-D-Z-0023



- Order Limits
- Landscape Study Area 3km
- Sheet extent boxes 1:50k
- Local planning authorities
- South Downs National Park
- Construction compounds
- Limits of Deviation for Otterbourne INNS Treatment Plant
- Landscape Designations**
- Country Parks
- Above Ground Plant**
- Break Pressure Tank

Coordinate system: British National Grid; Datum: OSGB 1936
 Data sources: © Crown copyright and database rights 2026 Ordnance Survey 0100031673. Sources: Esri, TomTom, Garmin, FAO, NOAA, USGS, © OpenStreetMap contributors, and the GIS User Community

PROJECT TITLE
 Hampshire Water Transfer and Water Recycling Project



Figure 13.11
 Landscape designations
 Sheet 5 of 5

Drawn DL	GIS Checked MW	Checked MP	Approved AK
Scale at A3 1:50,000	Status Final	Revision 05	Security STD

